



SafeNet Reader CT1100

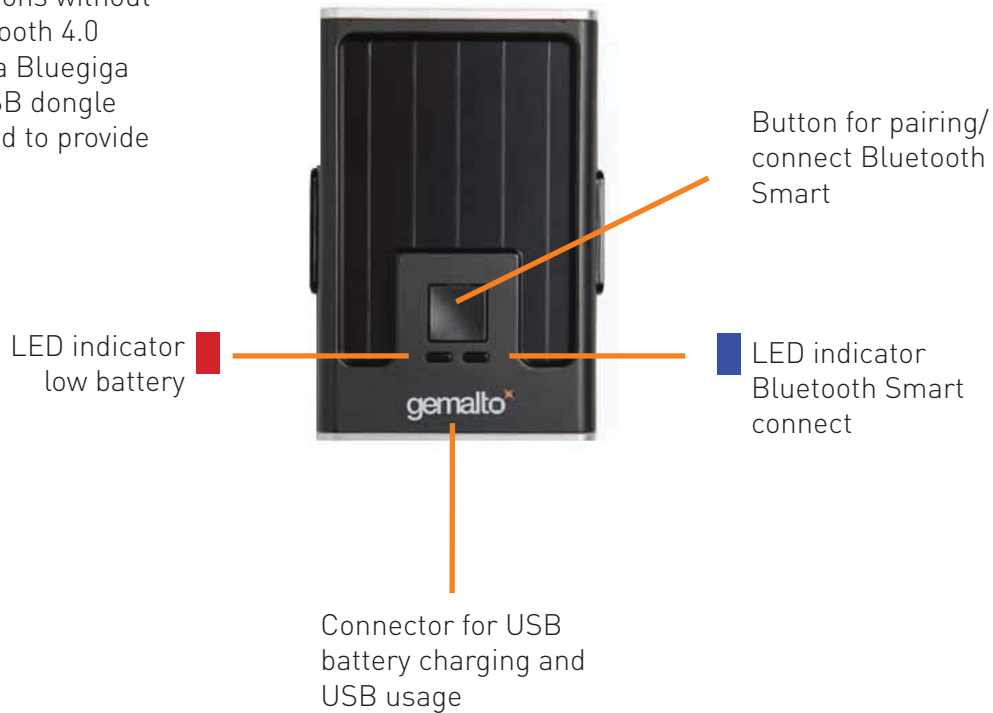
For Windows 7, 8.1 and 10

User Guide

General Features

Device features

For workstations without built in Bluetooth 4.0 capabilities, a Bluegiga BLED 112 USB dongle MUST be used to provide connectivity



Battery LED

Low Battery

- LED red indicator light is ON

Battery is charging

- LED red indicator light blinks slowly

Charge complete

- LED red indicator light is OFF

Bluetooth Smart LED

Discovery: waiting for a connection

- LED blue light flashing (short flash)

Pairing mode

- LED blue indicator light blinks quickly (after pushing primary button for 3 sec to initiate)

Bluetooth Smart connected

- LED blue indicator light blinks at normal speed (1sec on, 1 sec off)

Data transfer

- LED blue indicator light is ON

Deep Sleep

- LED blue indicator light is OFF

Modes

Turning on and off

Power on

- Push button once to turn on Bluetooth connectivity.

Power off

- Push button and hold for 6 seconds to turn off device.
- In Bluetooth mode, remove the card to turn off device.

Wake up

- Device will go into deep sleep/power saving mode after 4 minutes of no connection or operation. Push primary button to turn back on.

Charging

Charging through USB

- Battery charges fully in 3 hours.
- Bluetooth Smart wireless interface can be activated when charging through USB by pressing the button.
- Please note that USB connectivity will not be available during a Bluetooth session.

Charging with external power

- Bluetooth Smart wireless interface will still be active when charging on USB external power adaptor.

Battery life

- Typical battery duration is 3 weeks (continuous 10 hour login and 5 PKI operations a day).

Quick start

Battery

- Ensure battery is properly charged

Software

- Check Gemalto software package is installed correctly

Initiate pairing

- Press primary button for 3 seconds to set badge holder into pairing mode. The LED will blink quickly
- Once pairing communication has started, the badge holder switches to non-discoverable mode, and is not visible to any other master
- If pairing is not confirmed within 4 minutes, the badge holder goes back to deep sleep mode and disconnects.
- **Note:** Windows 10 ONLY, the CT1100 must be paired with Windows prior to pairing with the Gemalto GUI.

Pairing Complete

- The badge holder can record up to 10 different paired master devices. If list of paired devices is full when trying to pair with a new device, the master in that list that was connected the longest time ago will be removed

Detection Range

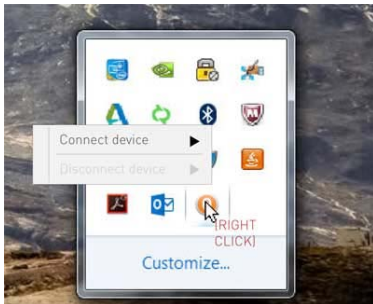
- The badge holder disconnects and enters deep sleep mode if moved away out of device detection range.

SafeNet Reader CT1100

Visual Reference

Pairing

1). Left click the Bluetooth icon to initiate pairing



2). Window will appear with list of previously paired devices. Select device to connect.



3). If your device has not been paired yet, click the + to add device.



4). You can now put your device in pairing mode



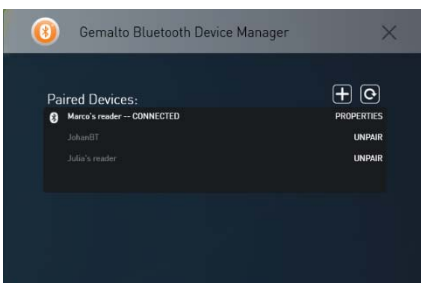
5). Your device will be connected



6). Select the autoconnect checkbox if you want the device to connect whenever in range



7). After the one-time pairing, your device will show in the list

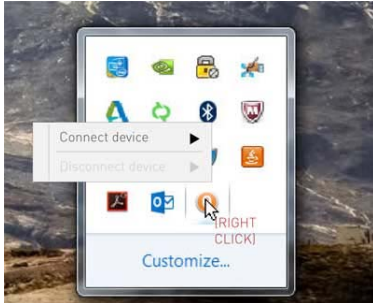


SafeNet Reader CT1100

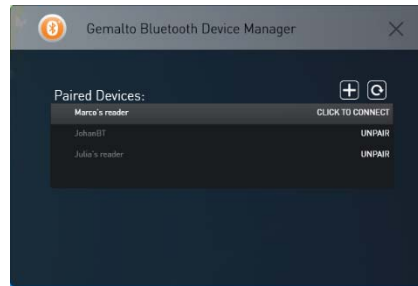
Visual Reference

Connecting

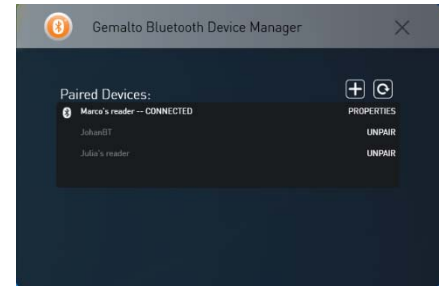
1). Left click the Bluetooth icon to quickly connect



2). Or find the correct device name. If the device is ready, it will say click to connect. Click on that line



2). The device will now appear as connected. If device is not on auto-connect, click on the device line to connect

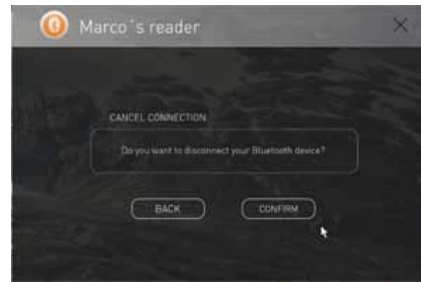


Disconnecting

1). Select disconnect device



2). A prompt will appear to make sure you want to disconnect. Press confirm to disconnect

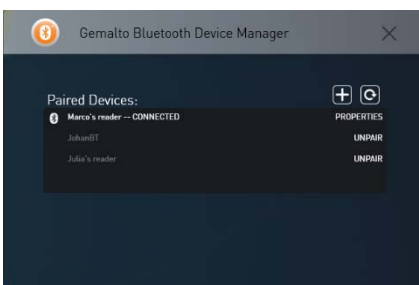


3). The device will now appear as ready to connect



Unpairing

1). Select device to unpair



2). Select unpair device



3). Confirm you want to unpair. The device will show unpaired



Troubleshooting

Device won't connect

What to do if you cannot use CT1100 from your device ?

- Make sure your OS is up-to-date
- Check all the components and ensure they are installed properly on your device
- Check that the CT1100 battery is charged
- Check that the CT1100 is powered ON
- Check that the pairing between your device and CT1100 was done correctly
- Check that your smart card is correctly inserted in CT1100

Compliance and Safety

Regulatory and Safety Notices

USA: Federal Communications Commission (FCC) Statement

This device complies with FCC part 15 FCC Rules. Operation is subject to the following two conditions:

1. This device may not cause harmful interference and
2. This device must accept any interference, including interference that may cause undesired operation of the device.

FCC Warning

Changes or modifications not expressly approved by the party responsible for compliance could void the user's authority to operate the equipment.

Note: This equipment has been tested and found to comply with the limits for a Class B digital device, pursuant to part 15 of the FCC Rules. These limits are designed to provide reasonable protection against harmful interference in a residential installation. This equipment generates, uses and can radiate radio frequency energy and, if not installed and used in accordance with the instruction, may cause harmful interference to radio communications. However, there is no guarantee that interference will not occur in a particular installation. If this equipment does cause harmful interference to radio or television reception which can be determined by turning the equipment off and on, the user is encouraged to try to correct interference by one or more of the following measures:

- Reorient or relocate the receiving antenna.
- Increase the separation between the equipment and receiver.
- Connect the equipment into an outlet on circuit different from that to which the receiver is connected.
- Consult the dealer or an experienced radio/TV technician for help.

This device meets the FCC requirements for RF exposure in public or uncontrolled environments.

EU (European Union): European Community declaration of conformity

We Gemalto, located at 525 avenue du Pic de Bertagne, 13881 Gémenos Cedex, France, declare under our responsibility that the products: USB & BLE Smart Card Reader and SafeNet Reader CT1100 conforms to the following product specifications:

Radio:	ETSI EN 300 328 (V1.8.1) EMF EN 62311 (2008)
EMC:	ETSI EN 301 489-1 v1.9.2 (2011-09) ETSI EN 301 489-17 v2.2.1 (2012-09) EN 55022 (2010) AC (2011) EN 55024 (2010) EN 61000-4-2 (2009) EN 61000-4-3 (2006) +A1 (2008) +A2 (2010)
Safety:	EN 60950-1 / A1 (2013)
Energy:	Regulation 1275/2008
Restricted Substances:	EN 50581:2012
CE marking year:	2015

Compliance and Safety

Additional information:

The product herewith complies with the requirements of the R&TTE Directive 1999/5/EEC
EMC Directive 2004/108/EC, Low Voltage Directive 2006/95/EC
Ecodesign requirements for Energy Related Products Directive 2009/125/EC
RoHS Recast Directive 2011/65/EU

Important Safety Instructions

- Read these instructions.
- Keep these instructions.
- Heed all warnings.
- Follow all instructions.
- Do not attempt to open the device. Substances contained in this product and/or its battery may damage the environment and/or human health if handled and disposed of improperly.
- Do not tamper with your device.
- Do not use abrasive cleaners to clean your device.
- Do not place your device in a dishwasher, washing machine or dryer.
- Do not expose your device to extremely high or low temperatures.
- Do not use your device in a sauna or steam room.
- Do not leave your device in direct sunlight for an extended period of time.
- Do not leave your device near open flames.
- Do not dispose of your device in a fire. The battery could explode.
- Do not attempt to disassemble your device. It does not contain serviceable components.
- Never allow children to play with the device. The small components may be a choking hazard!

Built-in Battery Precautions

- Do not attempt to replace your device battery. It is built-in and not changeable.
- Charge the battery in accordance with the instructions supplied with this guide.
- Use only USB "Limited Power Sources" charger models compliant with the IEC/UL 60950-1 clause 2.5 with maximum 15VA, and PS1 according to IEC/UL 62368-1.
- Do not attempt to force open the built-in battery.
- Storage 3 months max and temperature shall be 15°C +/-10°C.

Disposal and Recycling Information

This symbol on the product or on its packaging indicates that this product must not be disposed of with your other household waste. Instead, it is your responsibility to dispose of your waste equipment by handing it over to a designated collection point for the recycling of waste electrical and electronic equipment. The separate collection and recycling of your waste equipment at the time of disposal will help to conserve natural resources and ensure that it is recycled in a manner that protects human health and the environment. For more information about where you can drop off your waste equipment for recycling, please contact your local city office, your household waste disposal service or the shop where you purchased the product.

- Do not dispose of the device with household waste.
- Batteries are not to be disposed of in municipal waste stream and require separate collection.
- Disposal of the packaging and your device should be done in accordance with local regulations.

For additional information on safety, regulatory, disposal and recycling information, please visit <http://www.gemalto.com>

GEMALTO (Euronext NL0000400653 GTO) is the world leader in digital security with 2014 annual revenues of €2.5 billion and more than 14,000 employees operating out of 83 offices and 13 Research & Development centers, located in 43 countries. We are at the heart of the rapidly evolving digital society. Billions of people worldwide increasingly want the freedom to communicate, travel, shop, bank, entertain and work – anytime, everywhere – in ways that are enjoyable and safe. Our innovations enable our clients to offer trusted and convenient digital services to billions of individuals. Gemalto thrives with the growing number of people using its solutions to interact with the digital and wireless world.

For more information visit www.gemalto.com, www.justaskgemalto.com, blog.gemalto.com, or follow @gemalto on Twitter.